

ITDB02-2.2SP



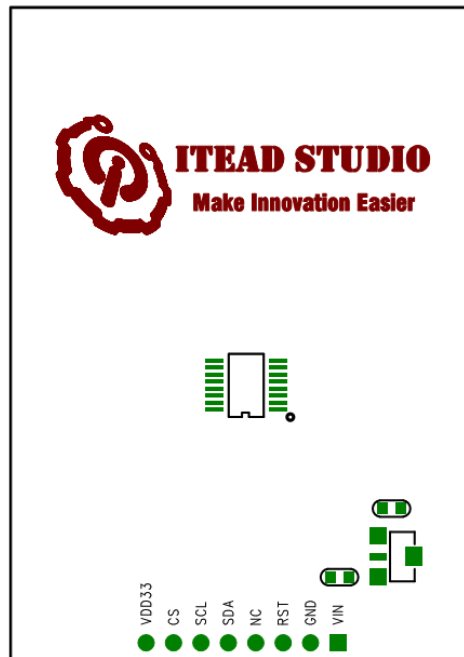
Specifications

PCB size	43.0mm X 6.05mm X 1.6mm
Power supply	5V DC
RoHS	Yes

Electrical Characteristics

Specification	Min	Type	Max	Unit		
Power Voltage	3.3	5	9	VDC		
Output Voltage	Target Voltage = 3.3V		3	3.3	3.6	V
VH	Target Voltage = 5V		4.5	5	5.5	
Output Voltage VL:	-0.3	0	0.5	V		
Current Consumption	-	20	40	mA		

Hardware



Bottom View

Pin Map :

Pin	Type*	Description
VIN	P	5V Power Supply pin
GND	G	Ground
RST	I	Reset, Low level active
NC	/	No Connection
SDA	I	Serial data input
SCL	I	Serial clock input
CS	I	Chip Selection, Low level active
VDD33	P	5V Power Supply pin

*: P: Power supply; G: Ground; I: Input; O: Output;

Revision History

Rev.	Description	Release date
v1.0	Initial version	2011-12-26